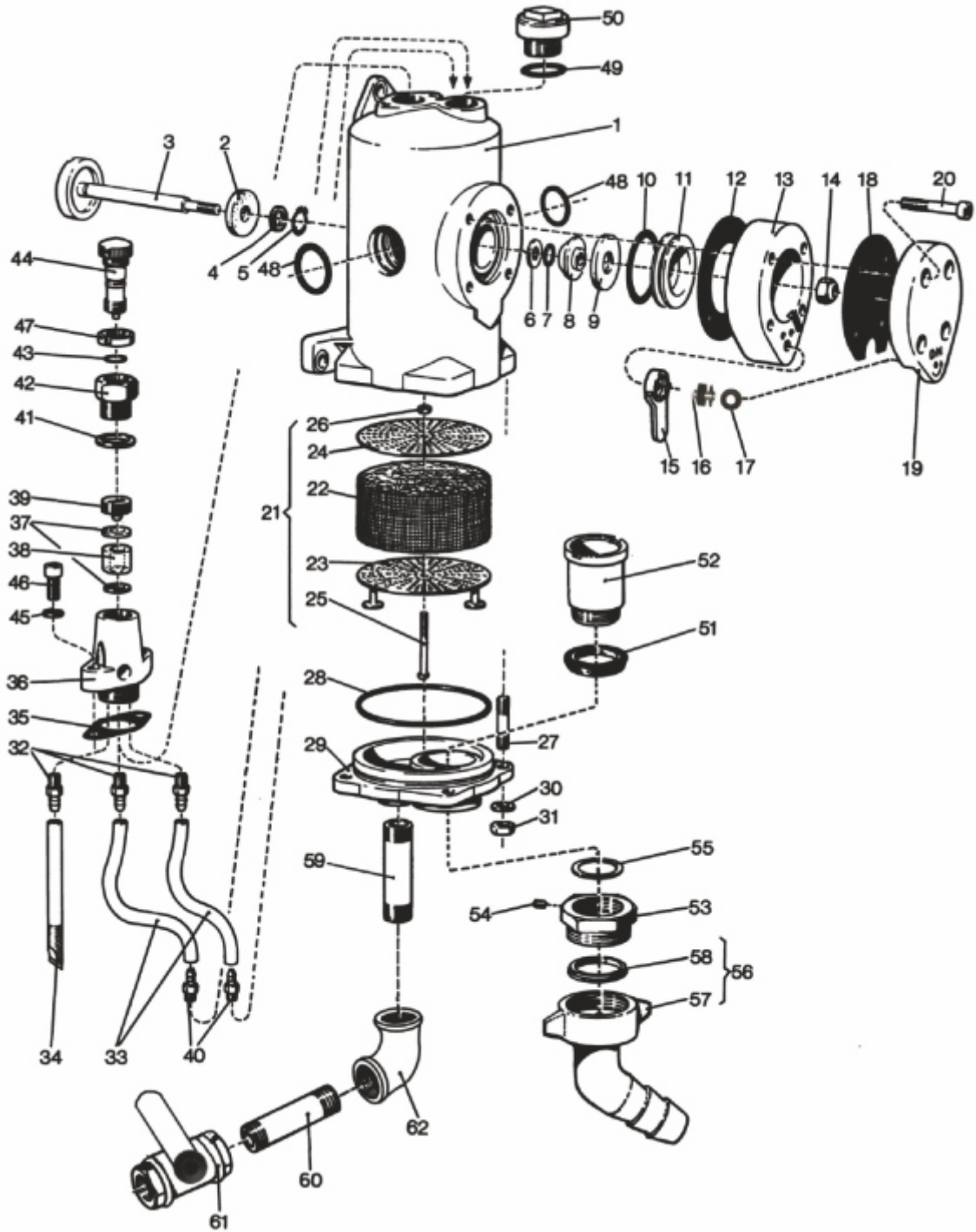


12. Oil Lubricator



12. Oil Lubricator

No.	Description	Modified		Ref. Part No.	QTY
-	Lubricator Complete			5042016583	1
1	- Container (Not Delivered Separately)			5042016500	1
2	- Gasket			5042020200	1
3	- Valve			5042020600	1
4	- Washer			5042019900	1
5	- Circlip			0335111400	1
6	- Washer			0301214100	1
7	- O Ring			0663211600	1
8	- Bushing			5042020500	1
9	- Gasket			5042020300	1
10	- O Ring			0663214000	1
11	- Piston bronze			5042021000	1
12	- Gasket			5042021100	1
13	- Spacer			5042021300	1
14	- Lock Nut			0291111100	1
15	- Lever			5042014800	1
16	- Pin			0101132000	1
17	- Cup Washer	0384315600	*	M10435	7
18	- Gasket			5042021200	1
19	- Cover			5042021400	1
20	- Screw			0211133000	4
21	- Filter Element Complete			5042014181	1
22	-- Element			5096988800	1
23	-- Spacer			5042017200	1
24	-- Spacer			5096988480	1
25	-- Screw			0166121700	1
26	-- Nut			0266110700	1
27	- Stud			0246128100	4
28	- O Ring			0663614900	1
29	- Cover			5042017000	1
30	- Spring Washer			0333213600	4
31	- Nut			0266111200	4
32	- Nipple			5042016700	3
33	- Hose			5054011000	2
34	- Pressure Hose			5042017300	1
35	- Gasket			5042016800	1
36	- Valve Housing			5042016600	1
37	- Gasket			5041013000	2
38	- Sight Glass			5041015100	1
39	- Screw			5041016000	1
40	- Nipple			5042024100	2
41	- Gasket	5041013400	*	M10459	1
42	- Adapter	5041012200	*	M10460	1
43	- O Ring			0663212000	1
44	- Set Screw			5041015900	1
45	- Spring Washer			0333213000	2
46	- Screw			0211136300	2
47	- Nut			0295310500	1
48	- O Ring			0663213600	2
49	- O Ring			0663213300	1
50	- Plug			5042024400	1
51	- Seal Ring PU			0665705100	1
52	- Sleeve			5042014900	1
53	- Adapter			5042015080	1
54	- Screw			0194132000	2
55	- Gasket			0653119500	1
56	Hose Nipple Complete 1 1/2"			5105083700	1
57	- Hose Nipple			-	1
58	- Gasket			9000002600	1
	PARTS FOR AIR OUTLET				
59	- Tube			0551320600	1
60	- Tube			0551321400	1
61	- Valve			8202090109	1
62	- Elbow			0560100600	1

Note : ① Reference Part Number Starting With 'M' - Is Modified