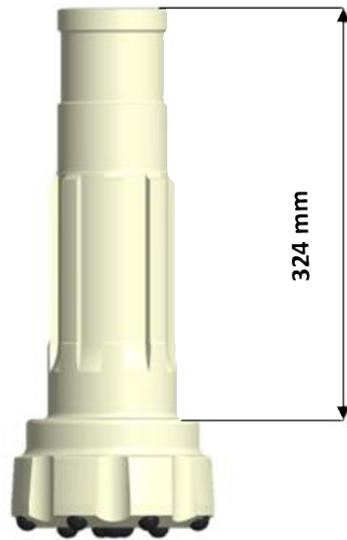
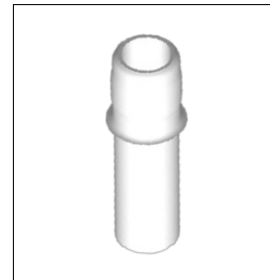


**9. 6" (152 mm) Button Bit SD6 Shank**



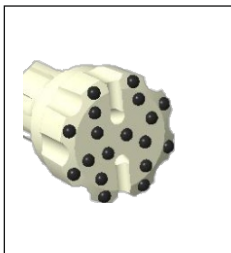
324 mm

**8 SPLINES**



Diameter		Gauge Buttons	Button diameter (mm)		Air Holes	Weight		Product No.
Inch	mm		Gauge	Face		kg	lbs	

**FLAT FACE**



6	152	8	16	16	2	24	52.8	<b>DB031215201S</b>
6 1/8	156	8	16	16	2	26	57.2	<b>DB031215601S</b>
6 1/2	165	10	16	16	2	26.5	58.3	<b>DB031216501S</b>
6 3/4	172	10	16	16	2	27	59.4	<b>DB031217201S</b>
7	178	10	16	16	2	25	55	<b>DB031217801S</b>
7 1/2	190	10	16	16	2	30	66	<b>DB031219001S</b>
8	203	10	18	16	2	32	70.4	<b>DB031220301S</b>

**CONCAVE**



6	152	8	16	16	2	25	55	<b>DB031215202S</b>
6 1/8	156	8	16	16	2	26	57.2	<b>DB031215602S</b>
6 1/2	165	10	16	16	2	28	61.6	<b>DB031216502S</b>
6 3/4	172	10	16	16	2	28	61.6	<b>DB031217202S</b>
7	178	10	16	16	2	29	63.8	<b>DB031217802S</b>
7 1/2	190	10	16	16	2	30	66	<b>DB031219002S</b>
8	203	10	18	16	2	32	70.4	<b>DB031220302S</b>
8 5/8	219	10	18	16	2	36	79.2	<b>DB031221902S</b>

**CONVEX**



6 1/2	165	10	16	16	2	24	52.8	<b>DB031216503S</b>
6 3/4	172	10	16	16	2	26	57.2	<b>DB031217203S</b>