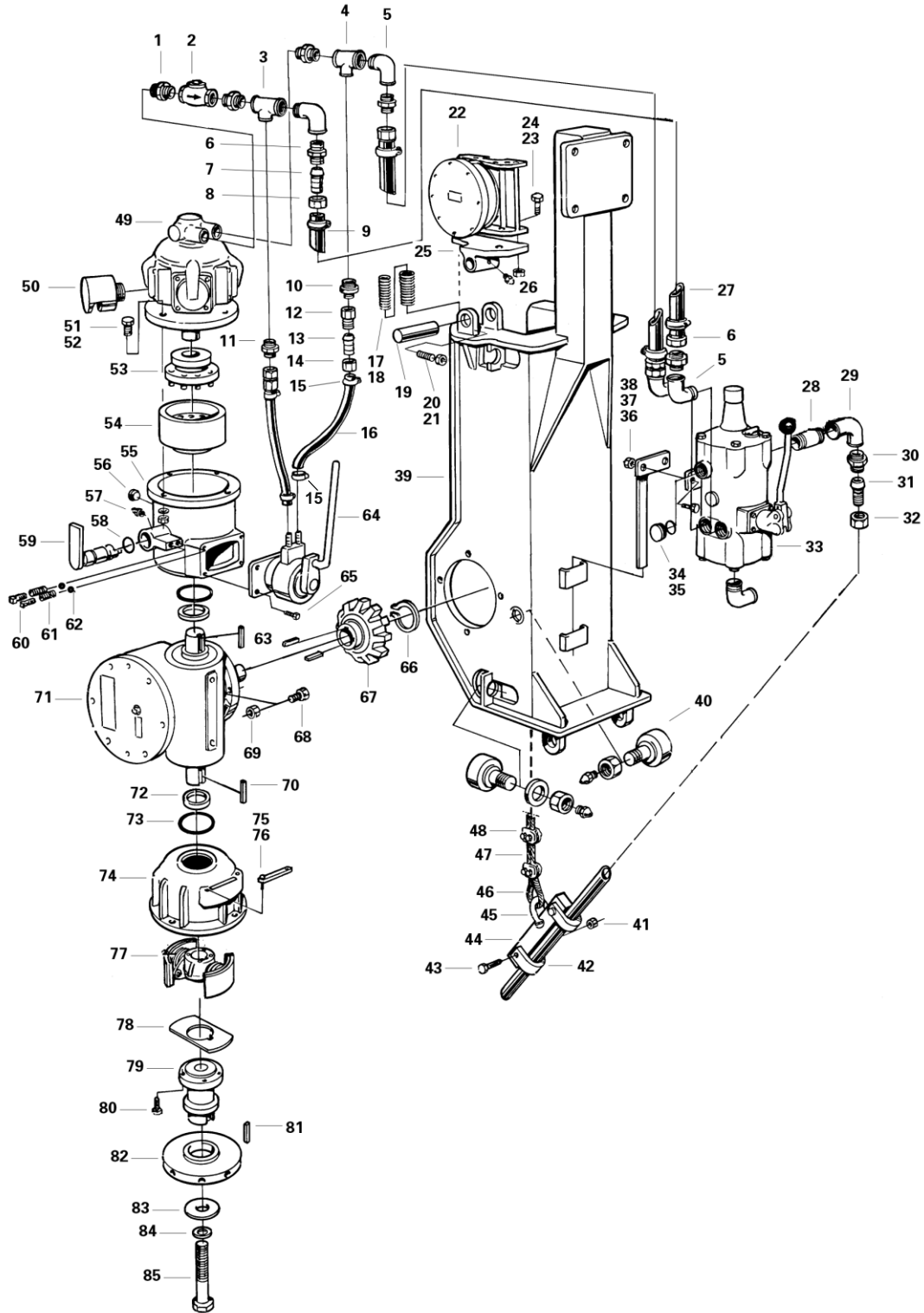


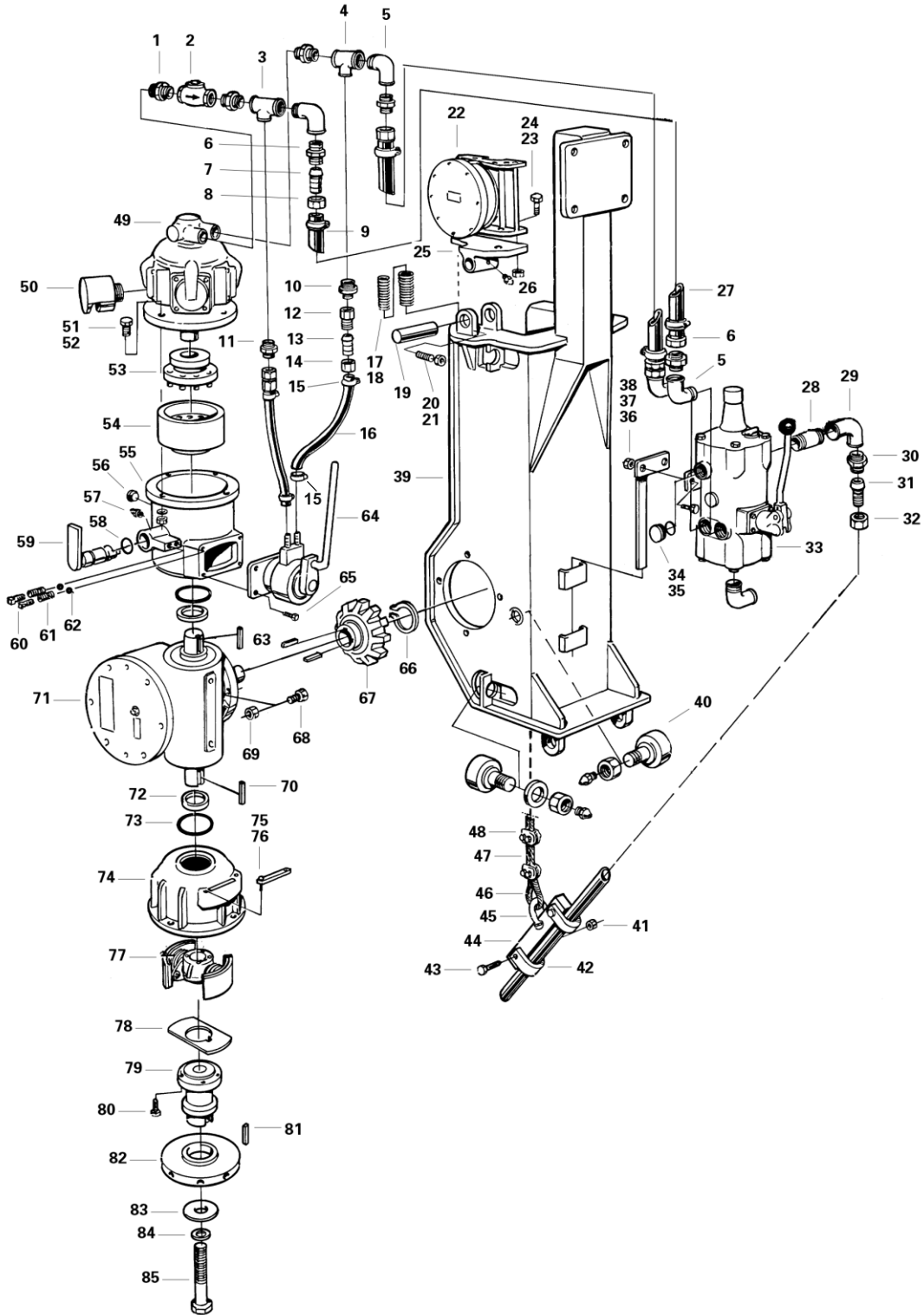
**5. Machinery (Alicab)**



## 5. Machinery (Alicab)

No.	Description	Designation	Ref. Part No.	QTY
–	Machinery (Alicab)		0174882000	1
1	Hexagon nipple		3000840116	3
2	Check valve		0470156000	1
3	Tee		3000839461	1
4	Tee		3000837516	1
5	Elbow		3000839216	5
6	Hexagon nipple		0415998000	4
7	Hose nipple		0416002000	4
8	Nut		0415997000	4
9	Hose clamp		3000931197	4
10	Hexagon nipple		3000840214	1
11	Hexagon nipple		3000840113	1
12	Hexagon nipple		0415999000	2
13	Hose nipple		0416000000	2
14	Nut		0416001000	2
15	Hose clamp		3000253024	4
16	Hose		3001150201	2***
17	Spring		0413682000	1
18	Spring		0413683000	1
19	Shaft		0471180000	1
20	Screw	T6SS 8x25 SMS 2182	3000150453	1
21	Nut	MBM 8-8.-fz	3000081118	1
22	Safety device		0277407000	1
23	Screw	M6S 16x45-8.8-fz	3000071629	3
24	Lock nut	L-K M6M16-8.-fz	3000438124	3
25	Bracket		0276877000	1
26	Grease nipple		3000221026	1
27	Hose		3001150251	2***
28	Nipple pipe		3000837251	1
29	Elbow		3000839116	1
30	Hexagon nipple		0415998000*	1
31	Hose nipple		0416002000 *	1
32	Nut		0415997000 *	1
33	Control valve		0145097000 *	1
34	O-ring		3000136408	3
35	Plug		0413688000	3
36	Bracket		0374916000	1
37	Screw	M6S 12x50-8.8-fz	3000071542	2
38	Lock nut	L- K M6M 12-8.-fz	3000438122	2
39	U-frame	438665	9001018000	1
40	Guide roller		9018650000	9
41	Lock nut	L-K M6M10-8.-fz	3000438120	2
42	Clamp		0474941000*	2
43	Screw	M6S 10x35-8.8-fz	3000071497	2
44	Yoke		0474940000	1
45	Shackle		3000860103	1
46	Thimble		3000305608	1
47	Wire		3001114108	1***
48	Wire clip		3000211203	4
49	Air motor (K-14V)	113752	9013834101	1
50	Outlet valve		0492402000	1
51	Screw	M6S 12x50-8.8-fz	3000071542	4
52	Lock nut	L-K M6M12-8.-fz	3000438122	4
53	Coupling		0475155000	1
54	Brake drum		0371072000	1
55	Coupling housing	272595	9001006000	1
56	Plug		3000858151	1
57	Grease nipple		3000221046	1
58	O-ring		3000136407	1

**5. Machinery (Alicab)**



## 5. Machinery (Alicab)

No.	Description	Designation	Ref. Part No.	QTY
59	Coupling Lever		0472855000	1
60	Pipe Plug		3000840510	2
61	Spring		0412234000	2
62	Steel Ball		3000131032	2
63	Key		3000741436	3
64	Brake Cylinder		0275684000	1
65	Screw	M6S 10x30-8.8-fz	3000071495	4
66	Circlip		3000132142	1
67	Pinion		0371053000	1
68	Screw	M6S 16x45-8.8-fz	3000071629	4
69	Lock Nut	L-K M6M 16-8.8.-fz	3000438124	4
70	Key		3000137439	1
71	Worm gear	278190/278192	0289985000	1
72	Sealing ring		3000916192	2
73	O-ring	272596	3000136431	2
74	Brake drum		9001015102	1
75	Screw	M6S 6x12-8.8-fz	3000071366	2
76	Inspection over		0474796000	1
77	Nave w. centrifugal	478175	9001014000	1
	Weights			
78	Support plate		0478078000	1
79	Nave		0374887000	1
80	Screw	M6S 10x25-8.8-fz	3000071493	4
81	Key		3000742425	1
82	Flywheel		0371349000	1
83	Washer		0411672000	1
84	Washer	BRB 13,5x24 HB200-fz	3000091179	1
85	Screw	M6S 12x130-8.8-fz	3000071558	1

\* För slang med inv. dia. 25 mm / For hose with inner dia. 25 mm / Für Schlauch mit Innendurchmesser 25 mm

\*\* Se märkplåt på ventilen / See sign on the valve / Sehen Sie Schild am Ventil

\*\*\* Ange längden i meter / State length in meters / Die Länge in Meter angeben